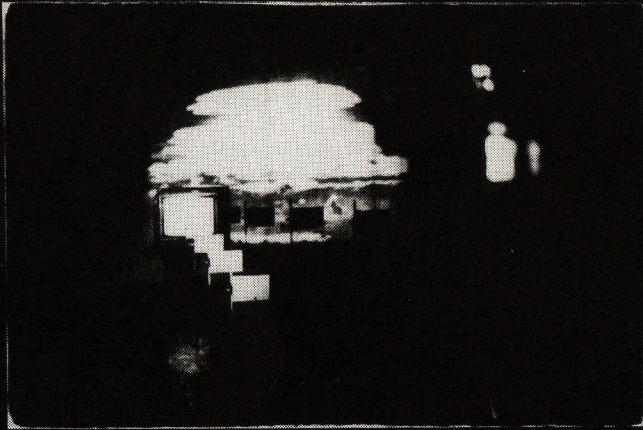
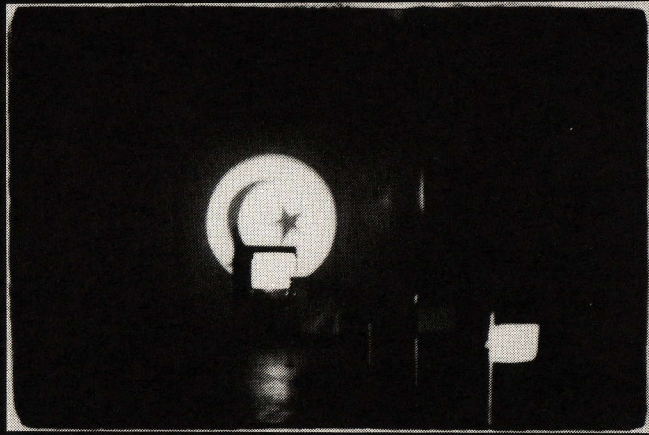



P _____ Cláudio GOULART



★ PERSPECTIVA _____

TIME BASED ARTS/BLOEMGRACHT 121/1016 KK AMSTERDAM/TEL 229764 

★ PERSPECTIVA

3 video players
 3 monitors
 (1 16 mm loop projector)

This work demonstrates the idea of perspective by means of video. White paper flags are arranged in a line and a camera records the line of flags in perspective. A monitor connected to the camera is placed behind the last flag. The resulting feedback create an infinite perspective of the lines of the flags.

An image of the full moon is then projected on to the first flag in the line. I set this flag on fire. An eclipse takes place. The projected moon reappears on the next flag. I move the camera towards this flag to maintain the perspective. This flag in turn is set alight, and so on down the line. As the final flag is burnt, another perspective is revealed.

Dit werk laat het idee van perspektief zien door middel van video.

Witte papieren vlaggen staan op een rij en een camera neemt de rij vlaggen op in perspektief. Een monitor, verbonden met de camera staat achter de laatste vlag. Het uiteindelijke resultaat vormt een oneindig perspektief van de rij vlaggen.

Een beeld van de volle maan wordt vervolgens op de eerste vlag geprojecteerd. Ik steek deze vlag in brand. Er ontstaat een verduistering. De maan verschijnt daarna op de volgende vlag. Ik beweeg de camera naar deze vlag om het perspektief te bewaren. Ook deze vlag wordt verbrand etc. Als de laatste vlag verbrand is, ontstaat er een ander perspektief.

*video performances, december 1983
 concept: Claudio Goulart

PERSPECTIVA

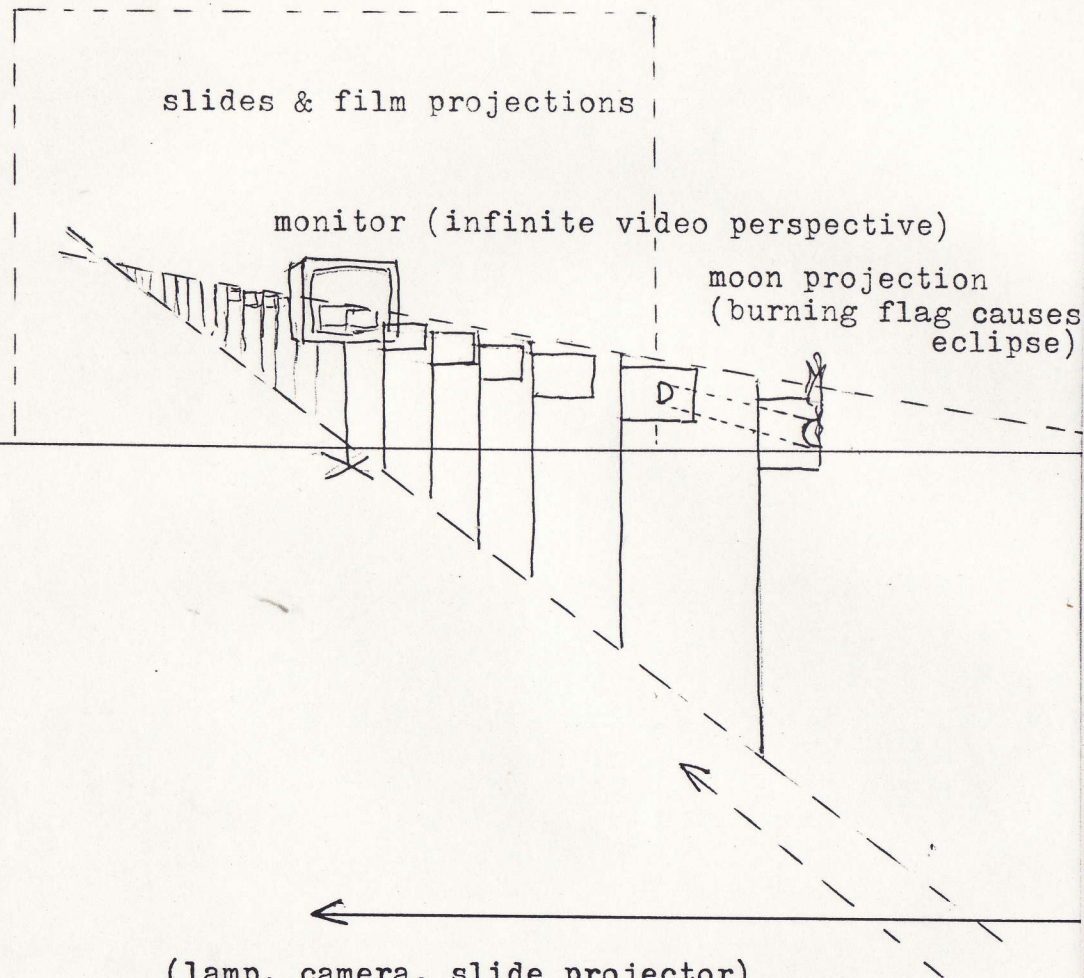
This work is based on the idea of perspective which is unique to European Art - this ideal way of seeing / this way of ordering the world according to one point of view / to someone's point of view.

White paper flags are arranged in line and a video camera captures the perspective. A monitor is placed behind the last flag and the resulting feed-back creates an infinite perspective of the line of flags. A series of slides of national flags is projected on the back wall suggesting landscapes.

An image of the full moon is then projected on the first paper flag in line. I set this flag on fire. An eclipse takes place as the moon reappears on the next paper flag. I move the camera towards this flag to maintain the perspective. This flag in turn is also set alight, and so on down the line.

As the last flag is burnt, another perspective is revealed.

Time Based Arts, 1983

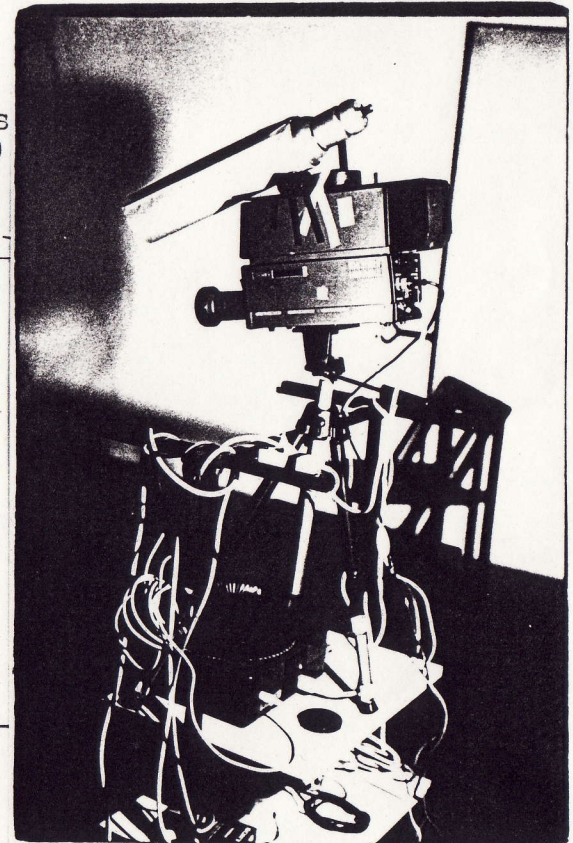


slides & film projections

monitor (infinite video perspective)

moon projection
(burning flag causes
eclipse)

(lamp, camera, slide projector)
carriage gradually advances to retain
perspective on the monitor



This work is based on the idea of perspective which is unique to European Art - this ideal way of seeing/ this way of ordering the world according to one point of view/ to someone's point of view.

