

PAULO BRUSCKY
CP - 850
RECIFE PE - BRASIL

GNO I Cr. 2.001



NERVO OPTICO
GALERIA CHAVES 31
PONTO ALTOB - RS
90000



1335527 2 2000



ARTE VIA
AEREA

Impressos

3x4 SHOW



A exposição será realizada durante o mês de ~~setembro~~ ^{novembro} de 1978 na vitrina da Livraria Livro 7
The exhibition will be realized in the shop-
window of the Library "Livro 7"

Cada participante receberá um catálogo com fotografias de todos os trabalhos

Each participant will receive a photographic catalogue enclosing all the works

Prazo de remessa: até ³⁰ ~~31~~ de ^{OUTUBRO} ~~agosto~~ de 1978
Deadline: till ~~august~~, ³⁰ ~~31~~ ^{of} ~~1978~~ ¹⁹⁷⁸

Os trabalhos deverão ser remetidos em fotos 3x4 para:

The works should be send in photos 3x4 to:

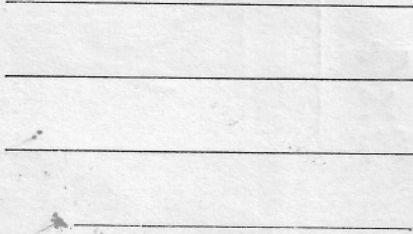
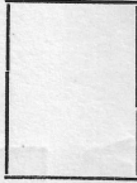
3x4 SHOW
Paulo Bruscky
CP 850 - Recife - PE - Brasil

PAULO BRUSCKY - CP 850 - RECIFE - PE - BRASIL

ARTE POSTAL

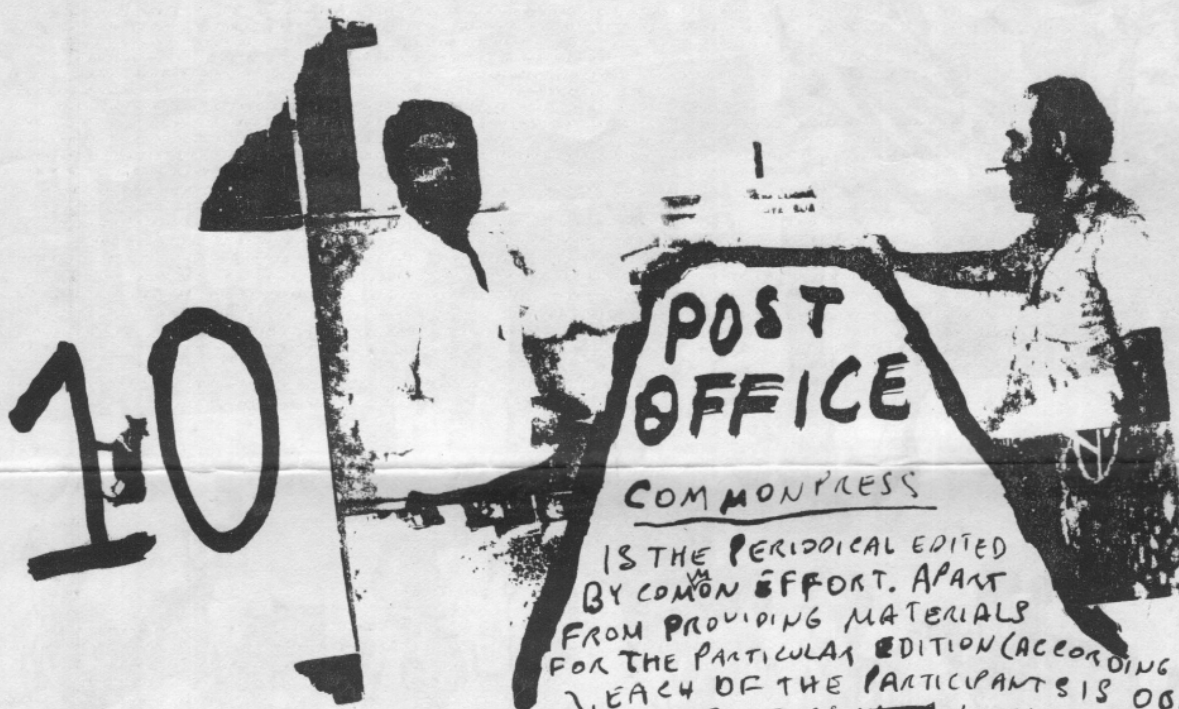
ARTE CORREIO

MAIL ART



GN01CR.2.001

COMMON PRESS



10

POST OFFICE

COMMON PRESS

IS THE PERIODICAL EDITED BY COMMON EFFORT. APART FROM PROVIDING MATERIALS FOR THE PARTICULAR EDITION (ACCORDING TO EACH OF THE PARTICIPANTS OBLIGED TO DEFINE TECHNICAL CRITERIA) EACH PARTICIPANT IS OBLIGED TO COLLECT MATERIALS, TO EDIT AND PRINT AS WELL AS TO DISTRIBUTE AMONG OTHER PARTICIPANTS - ARTISTS TAKING PART IN HIS EDITION - AT OWN CHARGES.

EACH OF PARTICIPANTS WOULD BE GIVEN AT LEAST 10 COPIES. THE SIZE OF ANY SINGLE EDITION IS DEPEND ON THE NUMBER OF PARTICIPANTS.

EVERY EDITION MAY BE DRAWN UP AT CHOICE. ONLY THE TITLE FORM, NUMERATION AND FORMAT BEING RETAINED. THE CHARACTER OF THE EDITION DEPENDS ON THE ABILITIES OF THE EDITOR, WHO SHOULD DEFINE IT, IN ORDER TO ANNOUNCE HIS EDITION IN THE PREVIOUS ISSUE. EVERY EDITION IS SIGNED BY ITS EDITOR.

WE ARE RESPONSABLE TO EDIT THE Nº 10

THEME: POST OFFICE

FORMAT: 14 X 20 cms.

DEADLINE: 30.10.78

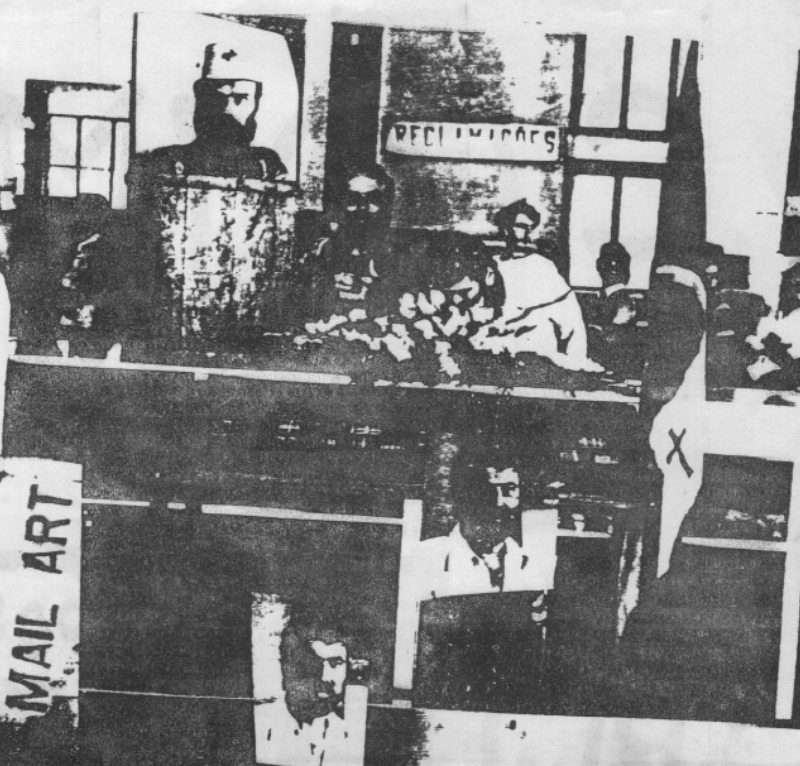
PLEASE SEND YOUR WORK (BLACK & WHITE) TO:

PAULO BRUSCKY
 CP 850
 RECIFE - PE - BRASIL

OR

LEONHARD FRANK DUCH
 CP 922
 RECIFE - PE - BRASIL

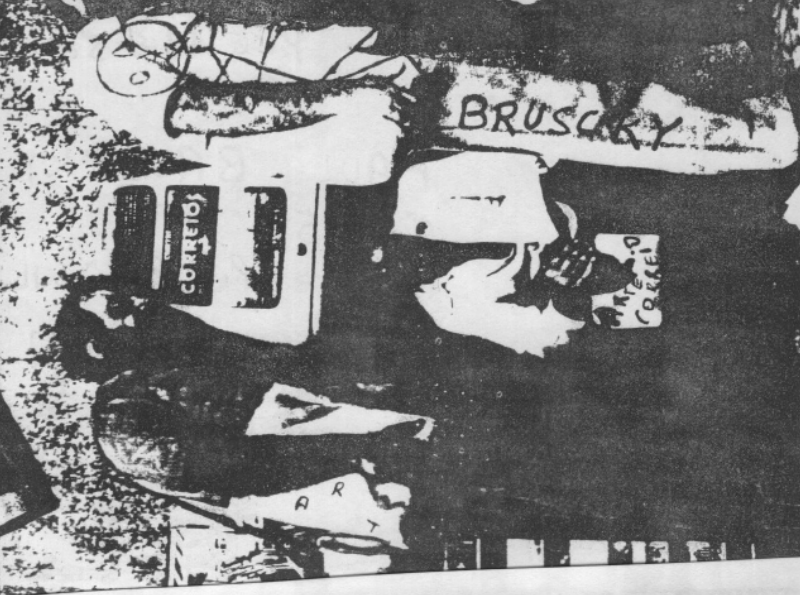
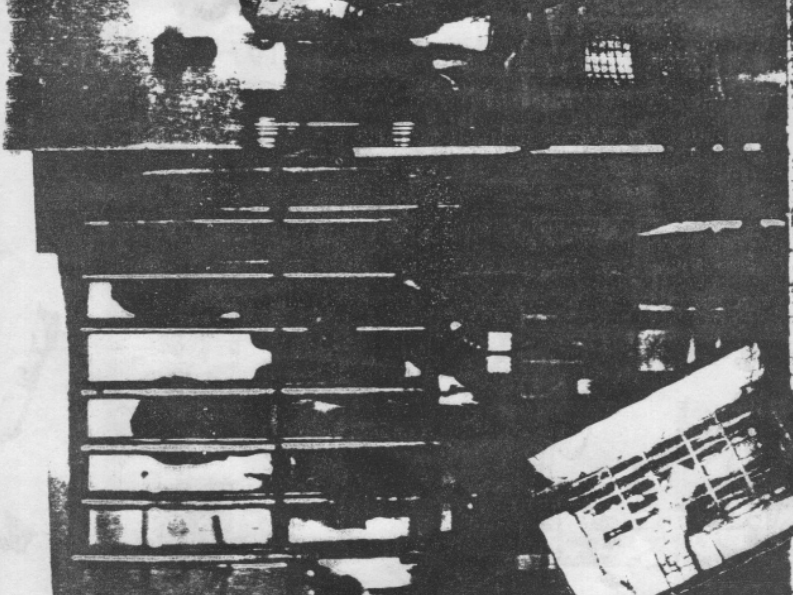
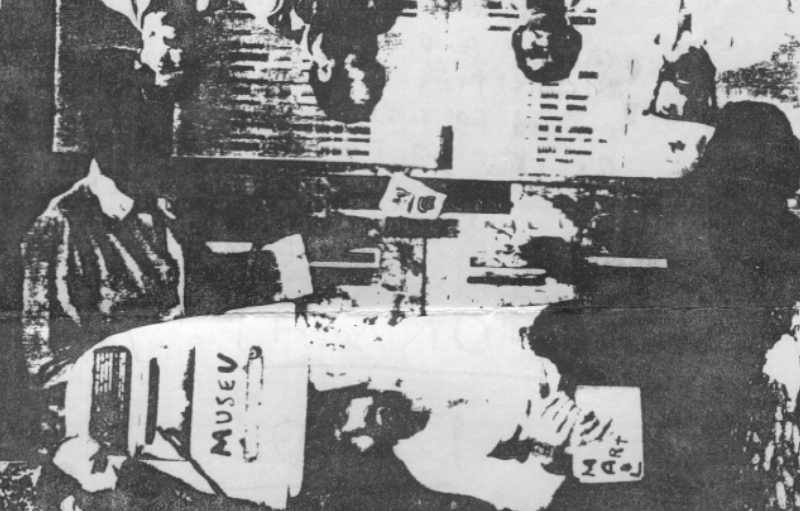
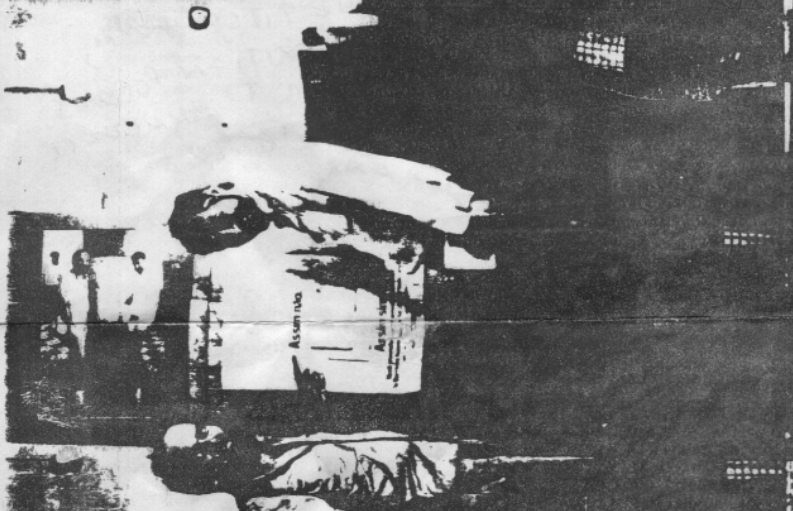




MAIL ART



DUCH



MUSEU

BRUSCKY

CORREIO

MADE IN

A R